

# Chamber Highlights



C A R L I S L E   A R E A   C H A M B E R   O F   C O M M E R C E

## DATES TO REMEMBER

\*\*\*\*\*  
**May 6th** - Wednesday - Executive Board Meeting - Chamber Office, 12 noon  
**12th** - Tuesday - Regular Chamber Meeting, 12 noon  
**19th** - Tuesday - Affiliate Presidents Council Meeting, Partnership Office, 700 Locust, DM - 7:30am  
**21st** - Thursday - Regional BAH - Pleasant Hill - Copper Creek Golf Course  
**28th** - Storm Chaser—Part 1—Business Continuity after a Disaster—lunch in Norwalk.  
**28th** - Storm Chaser presentation to the General Public—6:30—8:00 p.m. - HS Auditorium  
**29th** - Storm Chaser—Part 2 - Business Continuity after a Disaster—Breakfast in Norwalk  
**June 3rd** - Wednesday - Executive Board Meeting - Chamber Office, 12 noon  
**6th** - Saturday - Garden Party, North Park, 9 am - 2 pm  
**9th** - Tuesday - Regular Chamber Meeting - 6 pm—Scotch Ridge Vineyard  
**10th - 12th** - Wednesday - Friday - Partnership Washington DC Trip  
**13th** - Saturday - Tractor Show - Scotch Ridge Center, 9 am - 4 pm  
**16th** - Tuesday - Affiliate Presidents Council Meeting, Partnership Office, 700 Locust, DM—7:30 am  
**18th** - Thursday - Carlisle Chamber Golf Outing  
**18th** - Thursday - Regional BAH—Johnston  
**27th** - Saturday - Carlisle Fun Run, North Park, 8 am  
 \*\*\*\*\*



**CARLISLE & NORWALK CHAMBERS** combine efforts to present an educational series on disaster awareness.

Eddy Weiss, the son of a Chicagoland firefighter, aspired to follow in his father's footsteps and become a volunteer firefighter as a young man. The decision brought Eddy into a rural area where he was called upon to be a storm spotter and from there, Eddy's life changed.

Now, at 44, Eddy has created hundreds of presentations on disaster, resilience and is the nationally known lead chaser for the KHAS-TV Chasing4Life Storm Chase Team as well as the Director of Chasing4Life, a disaster

resilience education foundation.

The Storm Chasers will be coming on Thursday, May 28th. They will do school assemblies in Norwalk in the morning, then Norwalk Chamber Members/City Managers/Fire/Police and Carlisle Chamber Members/City/Fire/Police are invited to a Lunch where he talks about Business Continuity after a Disaster. From 6:30—8:00 p.m. he will give a Larger Presentation to the Public at the Carlisle High School Auditorium.

Part 2 of the Business Continuity after a Disaster will be held at a breakfast on Friday morning, May 29th in Norwalk.

## PLAN NOW TO ATTEND THESE EDUCATIONAL PRESENTATIONS

## NEW CHAMBER MEMBER



TMC Auto Body recently chose Carlisle as its new home, moving to 410 SE Garfield Street from SE Raccoon St. in Des Moines. Craig Peters established TMC Auto Body in 1982 after working in the auto body business since 1975. Craig and his wife, Marsha, have two grown daughters. Tiffany is a RN at Mercy and Ashley is a student teacher this year. An

Open House/Ribbon Cutting will be held in June.

TMC Auto Body gives free estimates, guarantees their work as long as you own your car and will give you a free loaner car to use while your car is being repaired.

Give Craig a call at 515.989.2798.

[www.tmcautobody.webs.com](http://www.tmcautobody.webs.com)



## LETTER FROM THE PRESIDENT



As President of the Carlisle Area Chamber of Commerce, I would like to thank all of the members of the Chamber for your continued support. It takes a cooperative effort to make a great community and we have one.

Our small town has many advantages. First, a great place to raise a family with "family values". Second, we boast a superior school system along with many youth programs. Summer activities include baseball, softball, soccer, and swimming. Other youth activities available are football, Boy and Girl Scouts, 4-H Clubs, and a host of others. Last, but certainly not least, there are many religious denominations to choose from.

The Mission Statement of our Chamber is to Promote and Assist New and Existing Businesses by Encouraging Economic Development and Enhancing the Quality of Life in the Greater Carlisle Area. Therefore, the Chamber encourages our residents to "Shop Locally".

Once again, thank you for your support. If there is anything that we as a Chamber can do to help your business with during the year, please don't hesitate to call a Board member, myself, or Ethel Lee our Executive Director.

Todd Isley, Chamber President  
515.989.0047

## 2009 CHAMBER CHAMPIONS

### PLATINUM MEMBERS

Carlisle Community School - Dr. Tom Lane

Great Western Bank - Tom Wagenknecht

### GOLD MEMBERS

Peoples Bank - Linda Frazier

Mid American - Katherine Kunert

### BRONZE MEMBERS

ANCO Mechanical Insulation - Brian Young

Community State Bank - Keith Welling

General Mills - Steve Curran

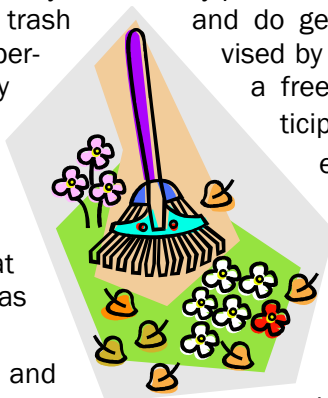
In addition to the Generous Support from these members, donations/sponsorships have been received for upcoming events/programs from Medicap, General Mills, Casey's General Stores, MWA, etc Graphics, Prairie Meadows, Copy Systems and AE Dairy.

## CARLISLE HS STUDENTS "GIVE BACK TO THE COMMUNITY"

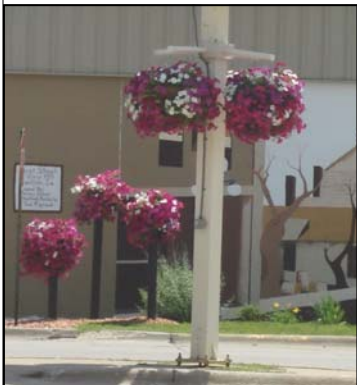
Carlisle High School students participated in the 2nd annual community cleanup day on Wednesday, April 15, 2009. This is a school-wide community service project organized through the HS Advisory Program. Students work in Carlisle, Hartford, and Palmyra in the city parks, cemeteries, bike trail and at some senior citizens' houses to rake leaves, pick up trash and do general spring cleanup. Students work with their advisory groups and were supervised by their advisors from 9:00 am until 12 noon. They then returned to school to enjoy a free sack lunch provided by the HS Student Council and then to watch and participate in the AP Dodgeball Championships.

This cleanup day is a cooperative community organizations. City employees on site in many locations to direct and like to thank all of the individuals that were able - especially Eileen Miller who has done much of the organization for this day.

Teaching students the importance and the goals of the Advisory Program. The students, faculty and staff at Carlisle High School appreciate the opportunity to say thank you to the community for the many ways that you support the school district and to "GIVE BACK TO THE COMMUNITY"!



## THAT TIME OF YEAR AGAIN



Every year, beautiful planters adorn light fixtures and street corners downtown. The colorful array of flowers give the area a seasonal flare.

However, such works of natural beauty do

require a certain amount of maintenance. Therefore, the Chamber's Beautification Committee is looking for individuals who would be willing to help water the plants. If you would be interested, please contact Ethel Lee at (515) 402-1008. The more people that we have sign up to help, the easier this job is. A vehicle will be supplied. No green thumb is needed!

## MWA FUNDS RAIN GARDEN

The Carlisle trailhead will be getting a facelift with the installation of a Rain Garden. The Chamber was recently awarded the funds for the Rain Garden from the Metro Waste Authority, MWA.

What is a Rain Garden? A rain garden is an attractive native plant garden with a special purpose, to reduce and filter the stormwater entering our local waters. It is constructed as a place to direct stormwater from roofs, driveways and parking lots, allowing water to be held in the plants, mulch and soil.

Rain gardens are created in low-lying areas with specific layers of soil, sand, and organic mulch. These layers naturally filter the rain as it runs into the rain garden and into our rivers.

Keep an eye on the Sunnyside Trailhead and the budding conservation efforts!



## PUMPKIN GROWERS NEEDED

Volunteers are needed to help make the first annual Halloweenfest a success! Anyone interested in growing pumpkins to be donated can contact the Chamber to receive free packets of seeds. The donated pumpkins will be used by the contestants in the pumpkin-carving contest. Any leftover pumpkins will be used to decorate downtown during the fall-themed event. So if you have a little room to grow and a little time to spare, please assist us in making Halloweenfest a fun festival for kids and kids-at-heart alike!

## REMINDER OF REGULAR CHAMBER MEETINGS

**MAY 12TH - 12:00 NOON - STADIUM VIEW, 130 S 1ST STREET, CARLISLE**

**JUNE 9TH - 6:00 PM - SCOTCH RIDGE VINEYARD, 15234 BLUFF TRAIL, CARLISLE**

## EVENT SPONSORSHIP OPPORTUNITIES

### JUNE 18TH - LOCAL GOLF OUTING

Contact Person:

Todd Isley 989-0047

(more information to follow  
at a later date)



### AUG 1ST - FAMILY BIKE RIDE/BREAKFAST

Sponsoring Businesses:

AE Dairy

Casey's General Stores

General Mills

Medicap Pharmacy



### AUG 24TH - TEACHER APPRECIATION BREAKFAST



Sponsoring Businesses:

ANCO Insulation

Carlisle Community School

Community State Bank

General Mills

Great Western Bank

Mid-American Energy

Peoples Bank

### SEPT 23RD - SDM/EDM/CARLISLE GOLF OUTING

Sponsoring Businesses  
to-date:

Prairie Meadows

Copy Systems, Inc.



IF YOUR BUSINESS IS INTERESTED IN HELPING TO SPONSOR ANY OF THESE EVENTS, PLEASE  
CONTACT ETHEL AT 515.402.1008.

## OPPORTUNITIES TO SUPPORT OUR LOCAL BUSINESSES

### *Spring Fling*

JUS CHIC

90 School Street, Carlisle

Date: Saturday, May 2nd

Time: 9 a.m. - 3:00 p.m.

Fun & Fantastic Sales

### *Bone Density Screening*

MEDICAP PHARMACY

800 School Street, Carlisle

Date: Friday, May 15th

Time: 1 p.m. - 4 p.m.

Cost: \$30

Receive a FREE pedometer w/screening

The Carlisle Area Chamber of Commerce has received a \$2500 grant from Prairie Meadows Racetrack and Casino through its 2008 Community Betterment Grant Program. Grant funds will be used to help Market our Image.

The Prairie Meadows Grants Advisory Committee, comprised of education, religious and business leaders from the greater metro area, review all grant requests and recommends funding levels. "We are extremely pleased to have received this funding from Prairie Meadows this year," said Todd Isley, President. "These funds will help ensure we have the dollars needed to complete mapping that can be used for our local directory and can also be placed on our website. **Thanks to Steve Peglow, from Peglow Art and Steve & Ben Murga from IAwebsites.com in accomplishing these efforts.**"

Prairie Meadows Community Betterment Grants are given to projects in one of four categories: arts & culture, economic development, education and human services.

Since 1996, Prairie Meadows has contributed more than \$399 million to promote education, economic development agriculture, jobs and tourism in Iowa.

## PRAIRIE MEADOWS GRANT





**MARK YOUR CALENDARS AND JOIN US!**

Monthly regular Chamber meetings are held in an effort to encourage more networking opportunities for our local businesses as well as a learning experience. Pictured at the right is an example. Dr. Lane shared the upcoming Carlisle School projects with the Business Community at a recent Chamber meeting.



Special interest programs are normally planned for each month. Please try to join us. Following is information for the upcoming May and June meetings.

**MAY REGULAR CHAMBER MEETING****TUESDAY, MAY 12, 2009****12:00 NOON****STADIUM VIEW****130 S . 1ST STREET, CARLISLE**

We have two presenters this month. Art Kern from MWA will give a presentation on disposal of Hazardous Waste for small businesses. And, Angela Luttenegger, School Counselor and a Representative from the Big Brother/Big Sister Program will give a presentation focusing on the Middle School.

PLEASE RSVP BY FRIDAY, MAY 8th - 515.402.1008

**JUNE REGULAR CHAMBER MEETING****TUESDAY, JUNE 9, 2009****6:00 P.M.****SCOTCH RIDGE VINEYARD****15234 BLUFF TRAIL, CARLISLE**

Come join us for our next evening Chamber event to be held on June 9th at the Scotch Ridge Vineyard. This has been an enjoyable event in the past years.

An Italian dinner will be served in the actual vineyard, weather permitting.

YOU ARE WELCOME TO BRING YOUR OWN BOTTLE OF WINE TO SHARE

PLEASE RSVP BY FRIDAY, JUNE 5th, FOR YOUR RESERVATION.

ADULT GUESTS ARE WELCOME AT \$10 EACH.



## STORM CHASER PRESENTATION

THE CARLISLE & NORWALK CHAMBERS ARE CO-SPONSORING THE KHAS-TV CHASING 4LIFE STORM CHASE TEAM TO COME TO OUR COMMUNITIES. EDDY WEISS AND HIS TEAM WILL PRESENT PROGRAMS TO THE BUSINESS COMMUNITY AND THE GENERAL PUBLIC.

**FOR BUSINESSES:** YOU ARE INVITED TO ATTEND TWO BUSINESS CONTINUITY WORKSHOPS TO LEARN ABOUT WEATHER SAFETY AND THE IMPORTANCE OF PLANNING FOR POTENTIAL DISASTERS.

DATE: THURSDAY, MAY 28, 2009  
WHAT: BUSINESS CONTINUITY WORKSHOP - PART 1  
TIME: 11:30 A.M. - 1:30 P.M.  
PLACE: FELLOWSHIP COMMUNITY CHURCH, NORWALK  
COST: \$5.00

\*\*\*\*\*

DATE: FRIDAY, MAY 29, 2009  
WHAT: BUSINESS CONTINUITY WORKSHOP - PART 2  
TIME: 7:00 A.M. - 8:30 A.M.  
WHERE: NORWALK  
COST: NO CHARGE

**FOR THE PUBLIC:** LEARN AND SEE ABOUT A STORM CHASER'S LIFE. THIS IS AN OPPORTUNITY TO NOT ONLY GRASP SEVERE WEATHER SAFETY, BUT WILL ALSO GIVE A SENSE OF THE IMPORTANCE OF PLANNING FOR POTENTIAL DISASTERS.

DATE: THURSDAY, MAY 28, 2009  
PLACE: CARLISLE HIGH SCHOOL AUDITORIUM  
TIME: 6:30 P.M. - 8:00 P.M.  
COST: FREE ADMISSSION



# CHAMBER NIGHT

**SATURDAY, MAY 30**



**VS.**



**KICK OFF AT 7:05 PM**



**As a member of your Chamber and the Greater Des Moines Partnership, you can purchase discounted tickets for you, your employees, family and friends for as low as \$10.**

**\* Seat locations are based on availability.**

**NETWORKING TAILGATE**  
Mix and mingle with members of 20 Area Chambers at an exclusive tailgate area for Chamber Night.  
**Live Music, Food and Fun begin at 4 PM.**



**FOR TICKETS CONTACT**  
**Grant Young 564-8454**  
**gyoung@theiowabarnstormers.com**



100 Level Sideline/ Barnyard	\$21.00
100 Level Corners	\$16.00
100 Level Endzone/ 200 Level Sideline	\$13.00
200 Level Endzone	\$10.00



## FLOWER POT MANIA

The Garden Club is inviting local businesses to decorate a flower pot to donate to the

Garden Party for Flower Pot Mania. The results of your participation would be three-fold. First, by helping the Garden Club you would be helping the Carlisle Community (The Garden Club maintains the North Park gardens).

Next, you would receive exposure for your business. (The Garden Party is highly publicized in the Carlisle Citizen as well as other area publications and websites.) And lastly, you would have fun planning, decorating and filling your flower pot.

The flower pot could be decorated in many ways. You could make the theme of your flower pot match your business (i.e.— a dental office could do a 'smile' theme ) or the pot could be filled with items from your business (i.e.—a dental office could use toothbrushes and toothpaste ) or items to match your theme and coupons/advertisements for your business.

You may pick up a flower pot to decorate at Moe's Coffee Shop or Four Season's Floral. The flower pots will be sold at the Garden Party for \$15. We would like to display your pot and/or put a picture in the paper prior to the Garden Party. **Please return your completed pot to Moe's Coffee Shop or Four Season's Floral by May 15th.**

## **I BELIEVE CAMPAIGN**

A new community campaign called “I believe” begins this week. This campaign aims to celebrate Greater Des Moines, its opportunities, and the people whose conviction and spirit continually pushes this community toward greater success.

This endeavor is a group effort of media and community partners donating their time, services and ad space to launch this campaign. The “I believe” promotion will begin next week with a teaser campaign, and will launch full force the week of May 4<sup>th</sup>. We hope you will be a part of this movement.

Please join us at a kick-off event on Monday, May 4<sup>th</sup> from 4:30 –6:30 p.m. at Principal Park for a celebration of Greater Des Moines complete with live music and entertainment. Food and drink are available. Following the kick-off, the Iowa Cubs will host “I believe night”, with admission for only \$1. The first 1,000 people will be given free tickets to the game.

The founding partners of the “I believe” effort include Clear Channel Outdoor, the Greater Des Moines Convention and Visitors Bureau, Des Moines Radio Group, KCCI-TV, Mediacom, The Business Record, The Des Moines Register, The Greater Des Moines Partnership and Trilix Marketing Group. Applied Art and Technology, Harvest Research Center, Bill Nellens of East Court Atelier, Darwyn Web Studios, the Iowa Cubs, Competitive Edge Advertising Specialty Mfg Co., Authentic Records, the Des Moines Area Transit Authority, Smash, Catchwind Mobile Marketing and the City of Des Moines are also providing their in-kind services for campaign research and development.

This group of partners, many competitors in the marketplace, see the value of communicating, empowering and connecting with consumers on the economic realities facing our region. The campaign will share local economic indicators and feature the people of Greater Des Moines, sharing their individual stories of hope, opportunity and success.

***The campaign hopes to unite the community of  
Greater Des Moines in these challenging times.  
Together, we believe we can create a better day and  
a brighter future for the metro area.***

To learn more or get involved, visit [ibelievedm.com](http://ibelievedm.com).



## DES MOINES PARTNERSHIP CALENDAR

**“I believe” campaign kick-off– Monday, May 4 from 4:30-6:30p.m.** Join us to kick off a new community campaign, “I believe” – that aims to celebrate Greater Des Moines, its opportunities, and the people whose conviction and spirit continually push this community toward greater success (even in tough times). The celebration will be held at **Principal Park** and will feature live music, entertainment and the official kick-off of the “I believe” campaign. Following the kick-off, the Iowa Cubs will host “I believe” night with admission for only \$1! The first 1,000 people will be given free tickets to the game! To learn more about “I believe” visit [www.ibelievedm.com](http://www.ibelievedm.com).

**Net2Work – Monday, May 4 from 10:00a.m.- Noon.** Do you have a friend or family member who has lost their job? Net2Work is a new networking event to help unemployed professionals navigate their way back to employment. This forum provides opportunities to network/make new connections, learn from each other, learn from the “experts”, gain support in a “safe” environment – ultimately resulting in employment in Greater Des Moines. Net2Work will be held every other Monday morning beginning May 4, continuing until demand subsides. The first five events are scheduled to be held at the **Des Moines Botanical Center**. Net2Work –is a collaborative of the Greater Des Moines Partnership, Iowa Workforce Development and Right Management. Online registration available at [www.desmoinesmetro.com/events](http://www.desmoinesmetro.com/events) or contact Kathy at 515-286-4950.

**Youth in Business Summit – A Central Iowa Works Initiative, Wednesday, May 6 from 7:30a.m. – 12:30p.m.** An extensive group of partners here in Central Iowa have completed an 18-month study on why students are disengaging from the educational system here. We want to share with you, our business leaders, how impactful your involvement can be in developing the youth of today and your future employees. Please join us for this free summit as we explore best practice models of youth engagement, and inspire young people in Central Iowa to enter regional career pathways. The summit will be held at the Des Moines Club, 666 Grand Ave., 34<sup>th</sup> floor, Downtown Des Moines. [Click here](#) to register online. Questions? Contact Sue Gibbons at [sagibbons@dmacc.edu](mailto:sagibbons@dmacc.edu) or 515-697-7736

**Untangling the Web: Marketing to Women, Wednesday, May 20, 11:30a.m.-1:00p.m.** featured speaker: Betsy Perez, SheHive Marketing. Although statistics show that women make the majority of household purchases, marketers are still not on track when it comes to selling to women. Join us for this fun and informative Marketing to Women seminar that can help increase your company’s bottom line. **Cost** is \$20 per person for members; \$30 for non-members. The event will be held at Des Moines Golf and Country Club from 11:30a.m. – 1:00p.m. **Online registration** available at [www.desmoinesmetro.com/events](http://www.desmoinesmetro.com/events). Questions? Contact Meg Fitz at [mfitz@desmoinesmetro.com](mailto:mfitz@desmoinesmetro.com) or 515-286-4934. The Untangling the Web series is a joint venture between AMA Central Iowa and the Greater Des Moines Partnership.

A full calendar of events is available at [www.desmoinesmetro.com](http://www.desmoinesmetro.com)

EAST DES MOINES • CARLISLE • SOUTH DES MOINES

# CHAMBER

## golf outing

WHEN: *september 23, 2009* • PLACE: *copper creek golf course*  
 TIME: *1:00 p.m. shotgun start* • FORMAT: *4-person best shot*

Early Bird

\$85/person - \$340/team

After Sept. 4<sup>th</sup>

\$95/person - \$380/team

## Sponsorship Levels

**\$650 - Eagle Sponsor**

Foursome - Logo on Invitation - Signage at Hole

**\$550 - Birdie Sponsor**

Foursome - Signage at Hole

**\$250 - Par Sponsor**

Signage at Hole

**\$650 - Beverage Sponsor**Twosome - Logo on Invitation - Signage at Hole  
-30 Drink Tickets**\$200 - Reception Sponsor**

Banner &amp; Sponsorship Table

**\$200 - Lunch Sponsor**

Banner &amp; Sponsorship Table

For more information, please contact  
 Ethel Lee at 515-402-1008


 Company  
 Name: \_\_\_\_\_

Contact: \_\_\_\_\_

Address: \_\_\_\_\_

Phone: \_\_\_\_\_

Email: \_\_\_\_\_

Sponsorship Level: \_\_\_\_\_

Please fill out and return this form to:

Carlisle Chamber of Commerce  
 325 Garfield  
 P.O. Box 487  
 Carlisle, IA 50047

Check Enclosed: Yes / No, please invoice  
 (Please circle)

To pay with credit card, please contact  
 Janet Green at 515-283-9312

# JOIN A CHAMBER COMMITTEE TODAY

The Carlisle Chamber can't function without the members who volunteer for the major Chamber committees. COMMITTEE INVOLVEMENT IS IMPORTANT... and is a great way to network with other chamber members in smaller groups.

VOLUNTEER FOR YOUR COMMITTEE CHOICE BY CALLING 515.402.1008 TODAY!

## I. MEMBERSHIP COMMITTEE

### i. Ambassadors - CHAIRPERSON: DEE SMITH



*Responsibilities:* Identify new businesses in Carlisle. Contact businesses to extend Chamber's welcome, assure Chamber's presence at opening ceremonies and ribbon cuttings.

### ii. Programs - CHAIR: OPEN

*Responsibilities:* Help set up programs for meetings that are informative, educational, and timely and which address the needs of our membership.

### iii. Communications/Promotions - CHAIRPERSON: MARK GVIST



*Responsibilities:* Help develop the Membership Directory. Promote the Carlisle Chamber of Commerce and local businesses.

## II. GOVERNMENTAL AFFAIRS COMMITTEE - CHAIRPERSON: TOM LANE



*Responsibilities:* Encourage awareness of the political process and arrange forums to assist in establishing relationship between Chamber members and elected and appointed local government officials. Represent the Carlisle Chamber of Commerce at the Greater Des Moines Partnership Governmental Relations meetings.

## III. COMMUNITY DEVELOPMENT COMMITTEE - CHAIR: OPEN

*Responsibilities:* Help organize, plan promotion of, and volunteer for Chamber events. Brainstorm new events and new sponsorship opportunities to enhance member participation.

## IV. EXECUTIVE COMMITTEE

All Executive Board members are on this Committee

Financial/budget

Nominations

By-laws





The Natural Choice



## CARLISLE AREA CHAMBER OF COMMERCE

*An Affiliate of the Greater Des Moines Partnership  
And partnership with  
the Warren Co. Economic Development Corp*

PO Box 487  
325 Garfield Street  
Carlisle, IA 50047

Phone: 515-402-1008  
Fax: 515-989-3075  
E-mail: elee@carlisleiachamber.org

### MISSION STATEMENT

PROMOTING AND ASSISTING NEW AND EXISTING BUSINESSES BY ENCOURAGING ECONOMIC DEVELOPMENT  
AND ENHANCING THE QUALITY OF LIFE IN THE GREATER CARLISLE AREA

## LIST OF CHAMBER MEMBERS

### PLATINUM MEMBERS:

**Carlisle Comm School  
Great Western Bank**

### GOLD MEMBERS:

**Mid-American Energy  
Peoples Bank**

### BRONZE MEMBER:

**ANCO Mechanical Insulation  
Community State Bank**

21<sup>st</sup> Century Rehab  
AJ's Service  
Artistic Waste  
Avondale Veterinary Healthcare  
Bartholomew Construction Co.  
Bubba's Washboard  
Carlisle Care Center (2)  
Carlisle Chiropractic Clinic  
Carlisle Citizen  
Carlisle Dental  
Carlisle Foods  
Carlisle Veterinary Clinic  
Carlisle VFW Post 2099  
Casey's General Store #14  
Casey's General Store #1676  
Central Iowa Insurance (2)  
City of Carlisle (2)  
Classic Sports Grill & Bar  
Coldwell Banker, Paula Mahnke  
Custom Structures, Inc.  
D. Wright Construction, LLC  
Datavision, Inc.

Davitt Photo Alliance  
Dental Professionals (2)  
Edward Jones, Joe Schettler  
etc!graphics, Inc.  
Family Practice Clinic (2)  
Fiss'  
General Mills  
Goodhue-Nolte Insurance  
Goodhue Realty  
Greenwood's Sewer Service  
Heartland Co-Op  
Hubbell Realty  
IAwebsites.com  
IMAGES Photography, Lynda Richards  
InnovativEvents  
Iowa Elevator Systems and Service  
Iowa Realty, Dee Smith  
Iowa Water Management Corp  
James Oil Company  
Johnny & Mike's Pizza  
Jus Chic Boutique  
Kearney's Restaurant  
Kees Camp  
Kinter Construction Consulting  
Lovejoy's Cake Shoppe  
Marble Works, Inc.  
Mary Sue's Salon, Wig Boutique & Doll  
Orphanage  
Medicap Pharmacy  
Metro Waste Authority  
Moe's Joe Coffee House  
Multi-Craft Exterior Consultants  
Murphy Tower Service, LLC

My Sister's Place  
National Gutter Systems & Exteriors, Inc  
Ohnemus Construction  
Optometric Assoc of Warren Co. P.C.  
P & E Engineering Co.  
Peglow Art & Design Publishing  
Peterson Funeral Home  
Pirtle Auction  
Record-Herald and Indianola Tribune  
Roberts Htg, Cooling and Plumbing  
School Street Scholars  
Scotch Ridge Vineyard  
Snap Fitness  
South Park Apartments  
Stadium View  
Stuyvesant & Benton (2)  
Summerset Winery  
The Cutting Edge  
TMC Auto Body  
Watty's  
Webb's RV Park  
Welch Products, Inc.  
Woodhouse and Lee Construction  
Wyckoff Industries  
**INDIVIDUAL MEMBERSHIPS:**  
Appel, Staci - State Senator  
Berning, Bob  
Huisinga, Melinda  
Wright, David  
Carlisle Christian Church  
Holy Cross Lutheran Church  
Middle River Friends Church